

Presentation Title of Research is written in 12 pt  
— Subtitle of Research is 12 pt, if Necessary —

Taro YAMADA<sup>1</sup>, Hanako SUZUKI<sup>2</sup>, Ichiro TANAKA<sup>1,2</sup>

1 Department of Agriculture, ..... University, 2 Graduate School of Agriculture, ..... University

Keywords: ○○○○, △△△△, □□□□, ××××, (10pt)

I Introduction

This is a manuscript template. You can down load this template from our website.

II Body

1. Paper form , printing area, and number of pages

(1) Form and printing area

Use A4-size portrait mode, which print area is 250×170 mm. Left and right margins are both 20 mm, while upper and bottom margin are 24 mm on this.

(2) Number of pages

Acceptable page number of paper is 2 pages (presented at autumn meeting) or 1 page (spring meeting). Articles which editorial board members asked follow their instructions.

2. Font style and size

Title and subtitle size is written in 12 pt and others is in 10 pt. Font style is Times New Roman.

3. Title and subtitle

(1) Title and subtitle

Titles should be centered in top lines. Subtitle is enclosed with "—". Font size is 12 pt.

(2) Affiliation and author name

Affiliation name(s) and author name(s), are adjusted right after one blank space from title.

(3) Keywords

Write several keywords and adjusted left after one blank space from names .

4. About body

Start writing body after one blank space from keywords. Body is in 50 rows × double column, whose center margin is 7 mm. Basically, SI Units should be used in the paper. Follow below example order for chapter and section numbering.

- |     |      |                  |                   |
|-----|------|------------------|-------------------|
| I   | II   | III ...no period | (center)          |
| 1.  | 2.   | 3. ...           | (left adjustment) |
| (1) | (2)  | (3) ...          | (left adjustment) |
| a   | b    | c ...            | (left adjustment) |
| (a) | (b)  | (c) ...          | (left adjustment) |
| (i) | (ii) | (iii) ...        | (left adjustment) |

5. Figures and tables

Captions of figures should be located at bottom, while those of tables are upper in the center. All papers will be printed basically in monochrome

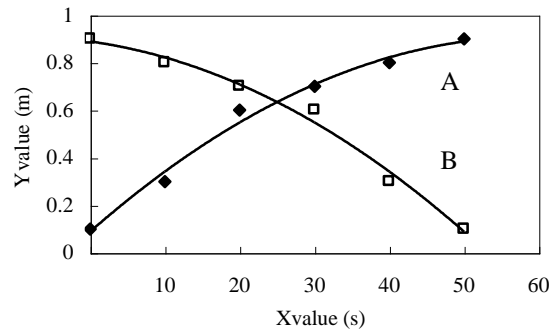


Fig.1 Example of figure

III Manuscript submission

Please submit papers presented at autumn meeting to head office within a month after the meeting for an issue in February, while submit papers presented at spring meeting immediately on the day at the meeting. Regarding articles which editorial board members asked follow their instructions. Please submit not only printed papers but also electric files

References

(Journals)

1) Taro KANSAI, Hanako KANSAI : Rule of Kansai Branch of JASM, Journal of the Japanese Society of Agricultural Machinery, 97(1), 99-102, 2002.

(Part of a Book)

2) Jiro KANSAI : Agricultural Engineering, XY Publishing Co., Ltd., 33-36, 2003.